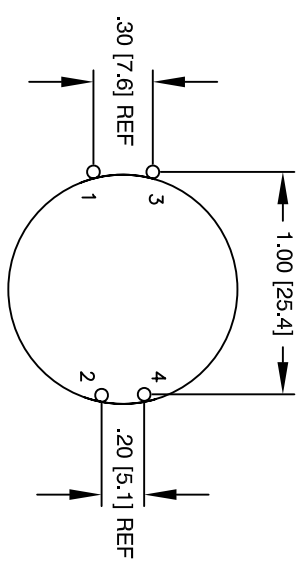
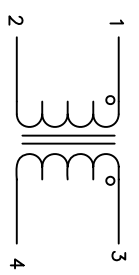
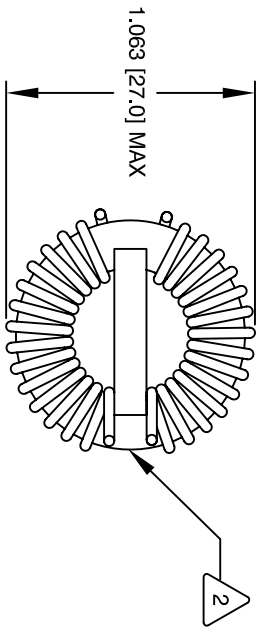
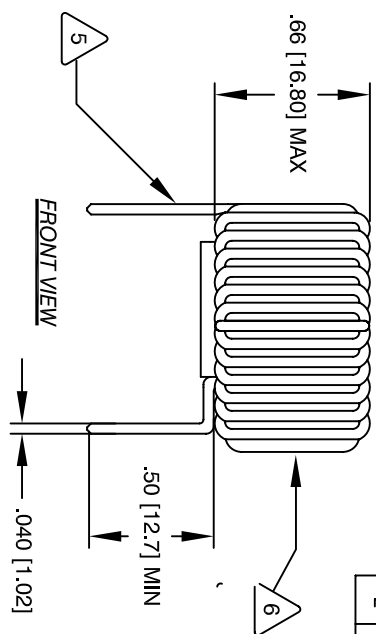


The information contained in this drawing is the sole property of Coil Winding Specialist, Inc. Any reproduction in part or whole without written permission of Coil Winding Specialist, Inc is prohibited.

REVISION HISTORY		SIGN & DATE				
REV	ECN	DESCRIPTION	BY	DATE	CHK	DATE
C		PRODUCTION RELEASE	TKK	1/05/05	JLJU	01/05/05
D		UPDATED	RCL	7/11/11	JLJU	7/11/11
E		UPDATED ELEC. AND MECH. SPEC	GN	4/27/12	AK	4/27/12



- 7 BUILD TO ROHS COMPLIANCE LEAD FREE
- 6 WHERE SHOWN, USING A PERMANENT MARKING METHOD MARK PART NUMBER AND REVISION IN APPROX TO THE CORE MUST REST FLAT ON PCB. LEADS MUST BE TANGENT FLUSH WITH THE COIL EDGE AS SHOWN (I.E. COIL REMOVE INSULATION AND TIN LEADS APPROX. 0.50 INCH
- 5 CORE AND EVENLY SPACED WIND SINGLE LAYER ON EACH SIDE OF CORE CONSTRUCTION:
- 4 TO INSURE INTERGRITY OF WINDING SEPARATION HI-POT TEST FOR INTERWINDING ISOLATION, 1250VDC RATED CURRENT = 7 AMPS/COIL DCR = 18 MOHMS MAX./COIL. L = 2.1 mH MIN/ 3 mH NORMAL, 1 KHZ, 1Vrms. SPECIFICATIONS @ 25 °C:
- 3 APPROVED PART OUTER WRAP: .3M #11 OR #69 OR EQUAL WIRE: UL RECOGNIZED 155°C RATING MAGNET WIRE OR HIGHER CLASS CWS BYTEAMARK OR OTHER APPROVED PART CORE: COATED FERRITE TOROID, HIGH PERM MNZN
- 2 SPACER RATING CLASS B (130°C) REQUIRED MATERIAL: UL RECOGNIZED 94V-0 FOR FLAMMABILITY
- 1 NOTES: UNLESS OTHERWISE SPECIFIED, READ FROM BOTTOM UP.

QTY	CODE IDENT	MFG. P/N	DESCRIPTION	ITEM NO.
			<b>PARTS LIST</b>	
	AUTOCAD SOLIDWORKS			
	DRWNN	TKK	DATE	
	ENGR	KSUM	1/05/05	
	APPR	JLJU	1/05/05	
TITLE:		Common Mode Choke		
SIZE		7 Amps		
DWG. NO.		C-B2133-00		
SCALE		2=1		
SHEET 1 OF 1				REV E

UNLESS OTHERWISE SPECIFIED  
 DIMENSIONING AND TOLERANCE PER ANSI Y14.5M AND [MILLIMETERS].  
 TOLERANCE INCHES: .XX=±.010 .XX=±.020 .X=±.030  
 TOLERANCE METRICS: .XX=±.254 .X=±.51  
 ANGLE PROJECTION  
 DO NOT SCALE DRAWING